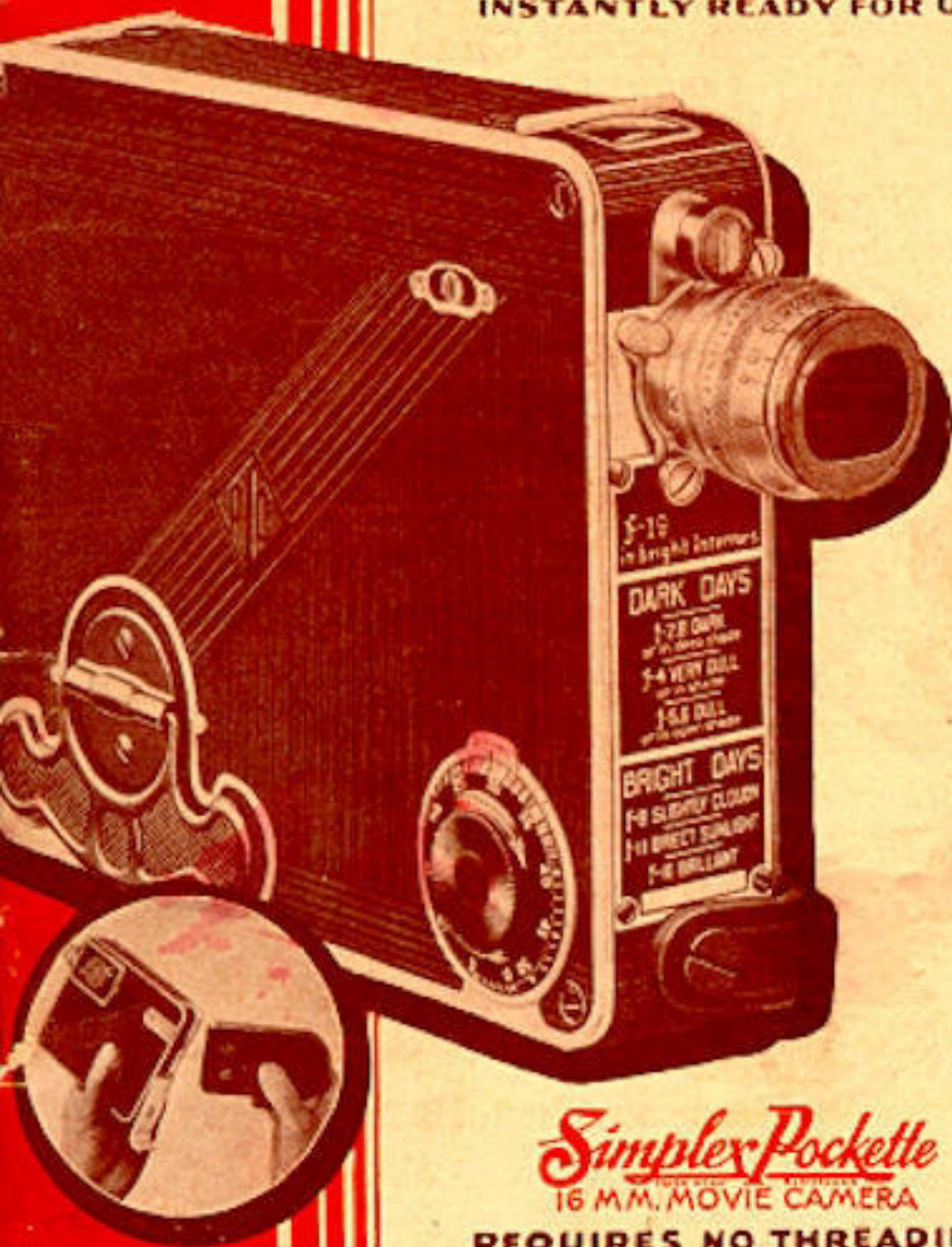


# *Simplex Pockette*

TRADE MARK REGISTERED  
• 16 MM. MOVIE CAMERA •

LIGHT AND COMPACT  
CONVENIENT TO CARRY  
EASY TO LOAD  
INSTANTLY READY FOR USE



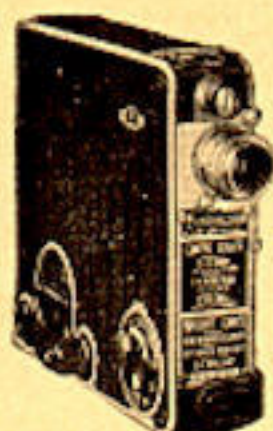
*Simplex Pockette*  
16 MM. MOVIE CAMERA

REQUIRES NO THREADING

OPEN DOOR • INSERT MAGAZINE  
CLOSE DOOR • AND BEGIN FILMING

**INTERNATIONAL PROJECTOR CORPORATION**  
88-96 GOLD STREET NEW YORK, N.Y.





Movie Making With  
*Simplex Pockette*  
All Purpose  
16 MM. Movie Camera

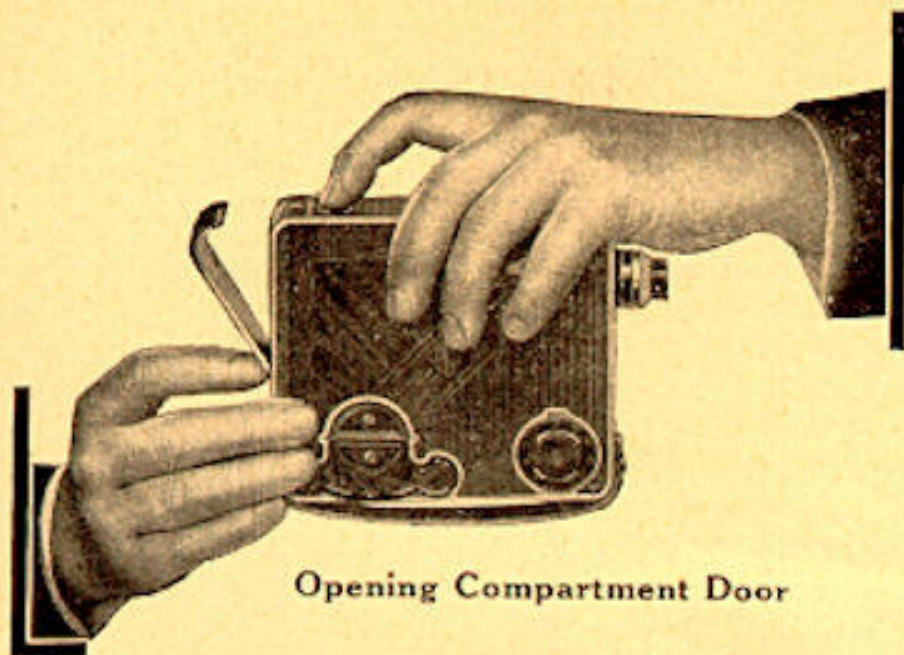
A Fascinating Recreation  
Made More Convenient  
and More Economical

In the design and construction of Simplex Pockette full consideration has been given to the realization that 16 mm. motion picture cameras are used by many who have neither the time nor inclination to understand the workings of complicated mechanisms. Simplex Pockette has, therefore, been made so simple, so positive in its action anyone can operate it. Taking motion pictures will be found no more complicated than making snap-shots. You can have all the thrill of taking your own movies and be freed of annoyances and disappointments due to the difficulties of mastering a series of elaborate operations.

Due to the unique flexibility of Simplex Pockette 16 MM. Movie Camera, it is possible to change almost instantaneously from Panchromatic to Super-sensitive film or to Kodachrome. The obvious advantage of this interchangeability enables you to use as much or as little of exactly the right kind of film for a particular condition by simply changing the Simplex Pockette magazine whenever and as often as you please.

Fascinating and beautiful results may be obtained with color and then the change can be made with but the loss of a single frame. Use as much or as little Kodachrome film as you desire—then change. Use as much or as little Panchromatic or Super-sensitive film as you desire—then change.





Opening Compartment Door

## LOADING

Simplex Pockette Camera is loaded by means of the patented Simplex Pockette or Magazine and **ABSOLUTELY NO THREADING IS NECESSARY.** Simply open door of camera, insert magazine, close door—and begin filming.

Simplex Pockette can be loaded in bright sunlight without danger of light fog and the entire operation of getting ready to take pictures requires but a few seconds. No shot is lost because of time wasted in loading. A child can insert or remove magazine, there are no difficulties or delays and as soon as the magazine is slipped into place the camera is ready to take pictures. **NON-THREADING AND MAGAZINE LOADING** are outstanding features of Simplex Pockette Camera which minimize waste of time and film and thereby reduce expense and disappointment due to threading. These unique features have greatly contributed to the popularity of Simplex Pockette.

## MAGAZINE

The Simplex Pockette or Magazine, loaded with 50 feet of 16 mm. Eastman safety film in Panchromatic, Super-sensitive or Kodachrome, is an essential part of the non-threading system of loading designed by us for the Simplex Pockette Camera and relieves the user of the bother and effort of threading the camera. Simplex Pockettes or Magazines are available through your nearest dealer.

the film. When using the Automatic Stop, if it is found necessary to run off more footage than the setting calls for, by simply holding back the starting button the Automatic Stop becomes inoperative.

## SELF-PHOTOGRAPHY

The Automatic Stop will be found invaluable in self-photography. Simply set the Automatic Stop, pull back the starting button and enter the picture. Simplex Pockette will automatically stop itself at the desired footage.

## TRIPOD MOUNTING

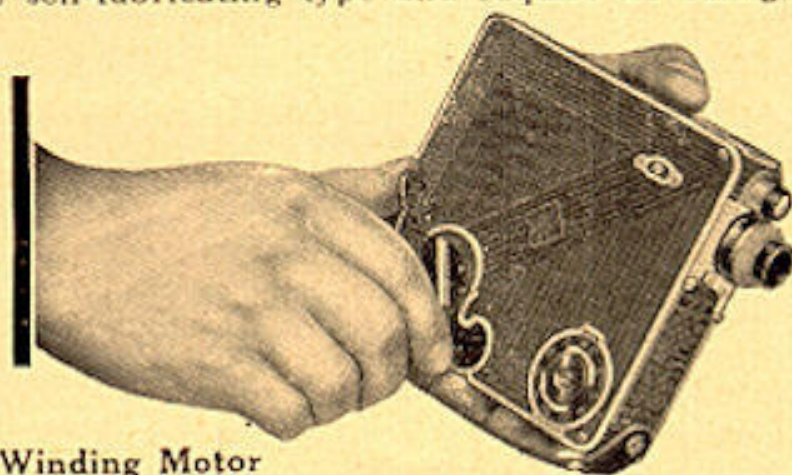
Simplex Pockette is equipped for tripod mounting.

## MOTOR

The powerful, silent double spring motor is wound with a convenient ratchet key attached to the side of the camera and two full windings will run the entire magazine. Double springs of the finest quality Swedish spring steel develop a smooth camera action and this results in securing a steadier picture. The camera can be fully wound with ease even by a child and will run 28 feet on a single winding so that there is no danger of running down in the middle of an important scene. The governor controlled motor allows the precise amount of power to be applied to run the correct number of frames desired per second.

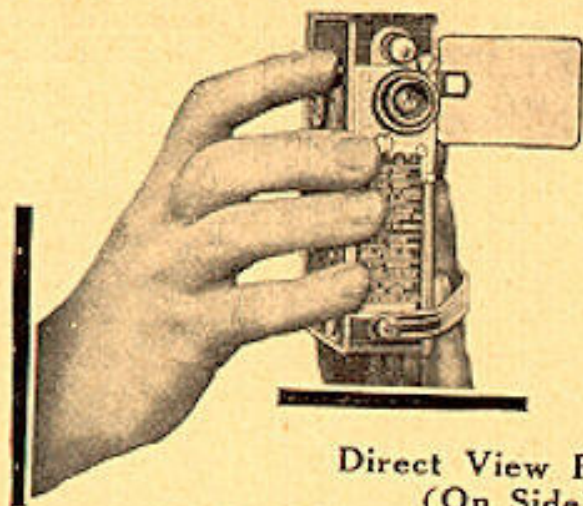
## LUBRICATION

The spring motor specially built for Simplex Pockette Camera is entirely enclosed and automatically lubricated. Bearings throughout are of the self-lubricating type and require no oiling.



Winding Motor





Direct View Finder  
(On Side)

## LENS EQUIPMENT

Simplex Pockette Cameras are identical in construction and appearance and variation in price is due solely to the type of Lens Equipment supplied. Lenses, made by the world's leading manufacturers, have been carefully selected to meet the particular requirements of Simplex Pockette Cameras.

Simplex Pockette Camera standard lens equipment is the well-known Kodak 1" f 3.5 Anastigmat lens of the indexing type which is removable and allows the use of any of our other lenses. Should a faster lens be required we recommend Simplex Pockette Camera equipped with Hugo Meyer & Company  $\frac{3}{4}$ " f 2.8 Trioplan fixed focus lens. A Kodak f 1.9 Anastigmat focusing mount lens will also be found ideal for Kodachrome work, interiors in particular. Hugo Meyer Telephoto lenses 2", 3", 4" and 7" focus, are furnished for Simplex Pockette Cameras.

Further details with prices will be found on page 9.

## LENS SETTING

A chart indicating the proper lens settings for ordinary conditions is attached to the Simplex Pockette Camera immediately beneath the lens. For other settings the standard exposure chart of the film manufacturers has been adapted to the Simplex Pockette Camera.

# Simplex Pockette

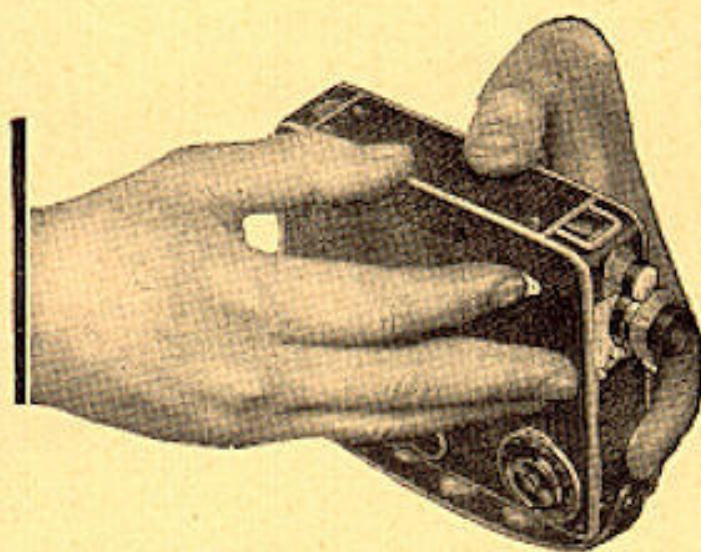
16 MM. Movie Camera

## SIZE AND WEIGHT

Simplex Pockette is the thinnest and lightest camera of its type and the perfectly balanced proportions permit maximum compactness and efficiency. Simplex Pockette weighs only 37 ounces, size  $1\frac{1}{8} \times 4\frac{3}{4} \times 5\frac{1}{2}$  inches and there are no protruding parts except the lens and finder barrel. As its name indicates, Simplex Pockette Camera can be carried in the pocket.

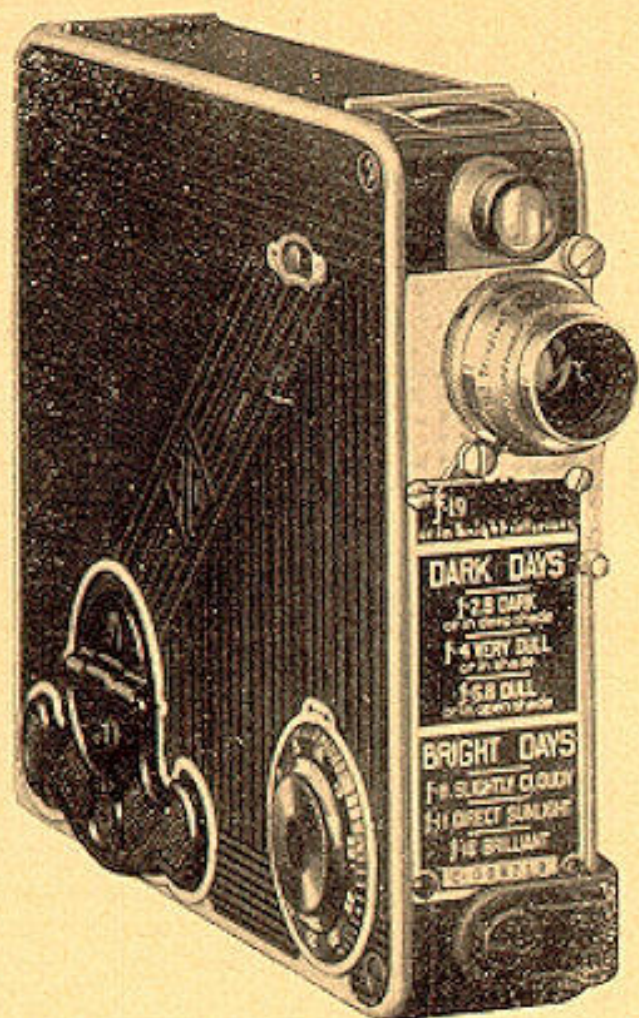
## APPEARANCE

The aluminum alloy casing, with dull silver finish, which encloses the working parts of Simplex Pockette Camera, is covered with handsome black or silver grey fibroid. Simplex Pockette Camera makes an extremely attractive appearance and the light but substantial casing is not easily marred by ordinary usage.



Brilliant View Finder  
(On Top)





MODEL "CC" SIMPLEX POCKETTE CAMERA  
With Hugo Meyer & Co. Trioplan  $\frac{3}{4}$ " f 2.8 lens  
fixed focus.

	List Price
Model CC with 1" f 3.5 Kodak Fixed Focus Indexing Mount Lens .....	65.50
Model CC with $\frac{3}{4}$ " f 2.8 Hugo Meyer Trioplan Fixed Focus Indexing Mount Lens.....	72.00
Model CC with 1" f 1.9 Kodak Anastigmat Focusing Lens.....	104.50

Prices subject to change without notice.

## Simplex Pockette

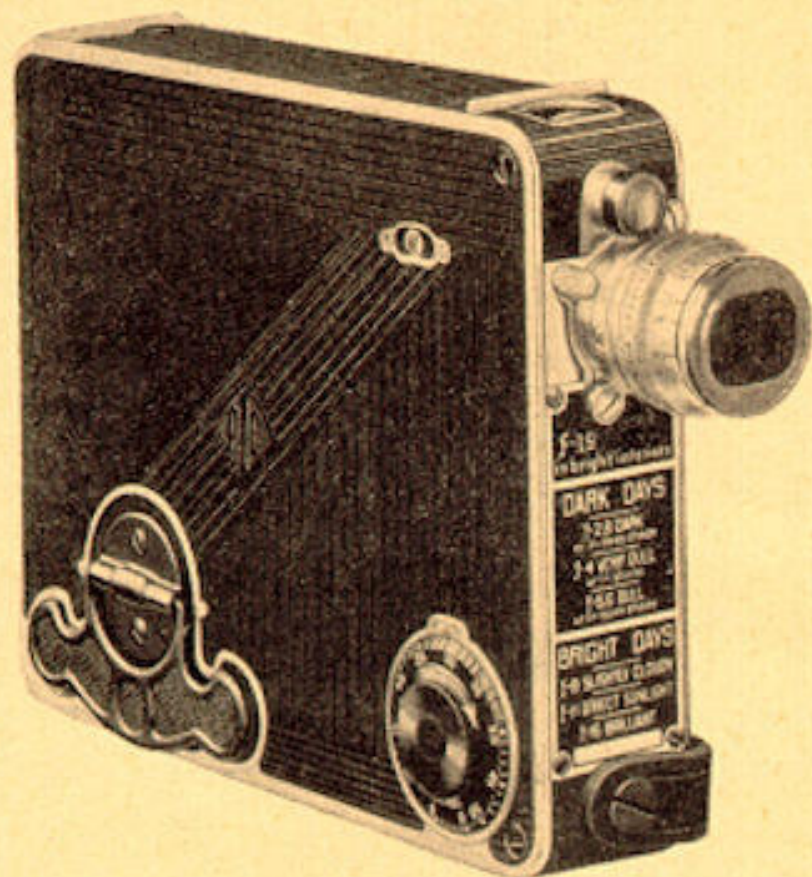
16 MM. Movie Camera

### Lenses Only

1" f 3.5 Kodak Anastigmat Fixed Focus Pointer Type (for Models B or C).....	\$ 18.00
1" f 3.5 Kodak Anastigmat Fixed Focus Indexing Mount (for Models B, C or CC).....	21.50
$\frac{3}{4}$ " f 2.8 Hugo Meyer Trioplan Fixed Focus Indexing Mount (for Models B, C or CC).....	27.50
1" f 1.9 Kodak Anastigmat Focus- ing, Bayonet Mount (for Model CC only) .....	60.00
2" f 4.5 Hugo Meyer Trioplan Telephoto (for Models B, C or CC) .....	50.00
3" f 4.5 Hugo Meyer Trioplan Telephoto (for Model CC only)	52.50
4" f 4.5 Hugo Meyer Trioplan Telephoto (for Model CC only)	62.50
2" f 2.9 Hugo Meyer Trioplan Telephoto (for Model CC only) .....	\$ 60.00

Prices subject to change without notice.





MODEL "CC" SIMPLEX POCKETTE CAMERA  
With Kodak 1" f 1.9 focusing mount lens.

3" f 2.9 Hugo Meyer Trioplan Telephoto (for Model CC only) .....	72.00
4" f 3 Hugo Meyer Trioplan Telephoto (for Model CC only) .....	82.00
7" f 5.5 Hugo Meyer Tele-Megor..	100.00

#### CASES FOR TELEPHOTO LENS

Genuine leather, silk plush lined, snap fastener.

3" Tripolan f 4.5 .....	\$2.25
4" " f 4.5 .....	3.50
3" " f 2.9 .....	3.00
4" " f 3. .....	3.50
7" " f 5.5 .....	3.50

Prices subject to change without notice

## Simplex Pockette

16 MM. Movie Camera

List Price

### Conversion

Model CC camera takes all of our  
lenses, regular and telephoto.

Model C converted to Model CC.... \$ 20.00

Model B converted to Model CC.... 25.00

Above includes conversion of f 3.5  
lens to removable indexing  
mount type.

### Yellow Lens Filters

For 1" f 3.5 Kodak or Ilex  
Lenses (2X, 3X or 4X densi-  
ties) ..... \$ 1.50

For 1" f 1.9 Kodak Lens (Rhaco  
2X, 3X or 4X densities, set of  
three with holder in leatherette  
box) ..... 6.00

For 1" f 1.9 Kodak lens CK2 or  
CK3 yellow filter with W mount  
each ..... 2.50

W mount only ..... 1.25

CK2 filter cell only ..... 1.25

CK3 filter cell only ..... 1.25

For 3/4" f 2.8 Hugo Meyer Lenses  
(2X and 5X densities)..... 3.85

For 3" f 4.5 Hugo Meyer Tele-  
photo (2X and 5X densities).. 4.20

Prices subject to change without notice.

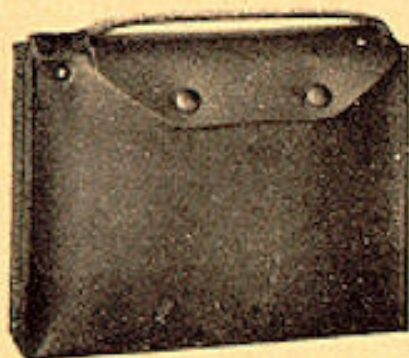


For 4" f 4.5 Hugo Meyer Telephoto (2X and 5X densities)....	4.95
For 2" f 2.9 Hugo Meyer Telephoto (2X and 5X densities)....	5.40
For 3" f 2.9 Hugo Meyer Telephoto (2X and 5X densities)....	6.60
For 4" f 2.9 Hugo Meyer Telephoto (2X and 5X densities)....	8.00
For 7" f 5.5 Hugo Meyer Tele-Megor (2X and 5X densities)..	7.25

### Portrait Attachments

For 1" f 3.5 Kodak or Ilex Lenses (sharp focus at 3 feet)..	\$ 1.50
For 3/4" f 2.8 Hugo Meyer Lenses (sharp focus at 3 feet).....	3.85

### CARRYING CASES:



#### Carrying Case No. 100:

Black morocco grain for Simplex Pockette Camera only.

Each ..... \$1.25

#### Carrying Case No. 150:

Same as above, but to accommodate camera with f 1.9 lens.

Each ..... \$1.75

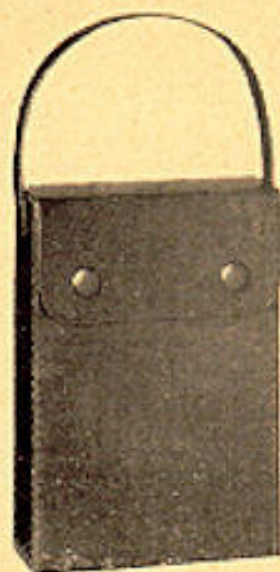
#### Carrying Case No. 200:

Brown suede, zipper top, double handles, for all models of Simplex Pockette Camera only.

Each ..... \$2.25



Prices subject to change without notice.



### Simplex Pockette

#### 16 MM. Movie Camera

#### Carrying Case No. 300:

Heavy black sole leather with hand strap.

For use with all models.

Each ..... \$3.50

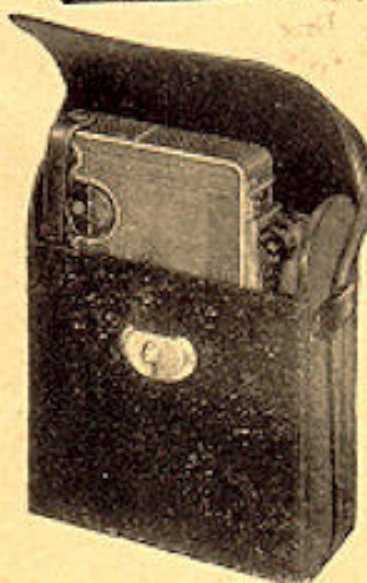


Carrying Case No. 400  
Heavy black sole leather with hand and shoulder strap. Compartment for SIMPLEX POCKETTE Camera and three extra film magazines (For use with all models.)

Each ..... \$4.50

Carrying Case No. 450  
Same as No. 400 but tan leather.

Each ..... \$5.00



Carrying Case No. 500  
Same as No. 400 but providing space to carry camera with view finder attached.

Each ..... \$5.50

Carrying Case No. 550  
Same as No. 500 but tan leather.

Each ..... \$6.00

Prices subject to change without notice.



# *Simplex Pockette*

## 16 MM. Movie Camera

### Carrying Case No. 3000

Dark Tan English saddle leather plush lined with accommodations for camera, view finder and all accessories. Same as used in

Fitted Travel Case . . . . . Each     \$30.00

### Fitted Travel Case No. 4000

Made with the care which is characteristic of all Simplex products, and provides a splendid carrying container for the complete Simplex Pockette equipment. All details have been given most exact attention and the complete equipment will meet every requirement of the maker of 16 mm. motion pictures.

Case is made of dark tan English saddle leather, hand sewn, silk plush lined, brass lock, hand strap and shoulder strap, fitted with Model CC Simplex Pockette Camera, equipped with Simplex Optical View Finder. Separate plush lined leather case in compartment contains the following essential accessories: Eastman Kodak 1" f 1.9 anastigmat focusing lens, Hugo Meyer & Company 20 mm f 2.8 Trioplan fixed focus lens, Hugo Meyer & Company 3" f 4.5 Trioplan telephoto lens, 2X and 5X yellow filters and portrait attachment for the 2.8 lens, W mount with yellow filter cells CK2-CK3, Kodachrome haze, Kodachrome photoflood for f 1.9 lens, 2X and 5X yellow filters and U-10 Kodachrome haze filter for telephoto lens,  $\frac{3}{4}$ ", 1", 3", masks for view finder. Compartment in case for four magazines of film, also plush lined compartment that will accommodate extra telephoto lens or exposure meter.

PRICE COMPLETE . . . . . \$255.00